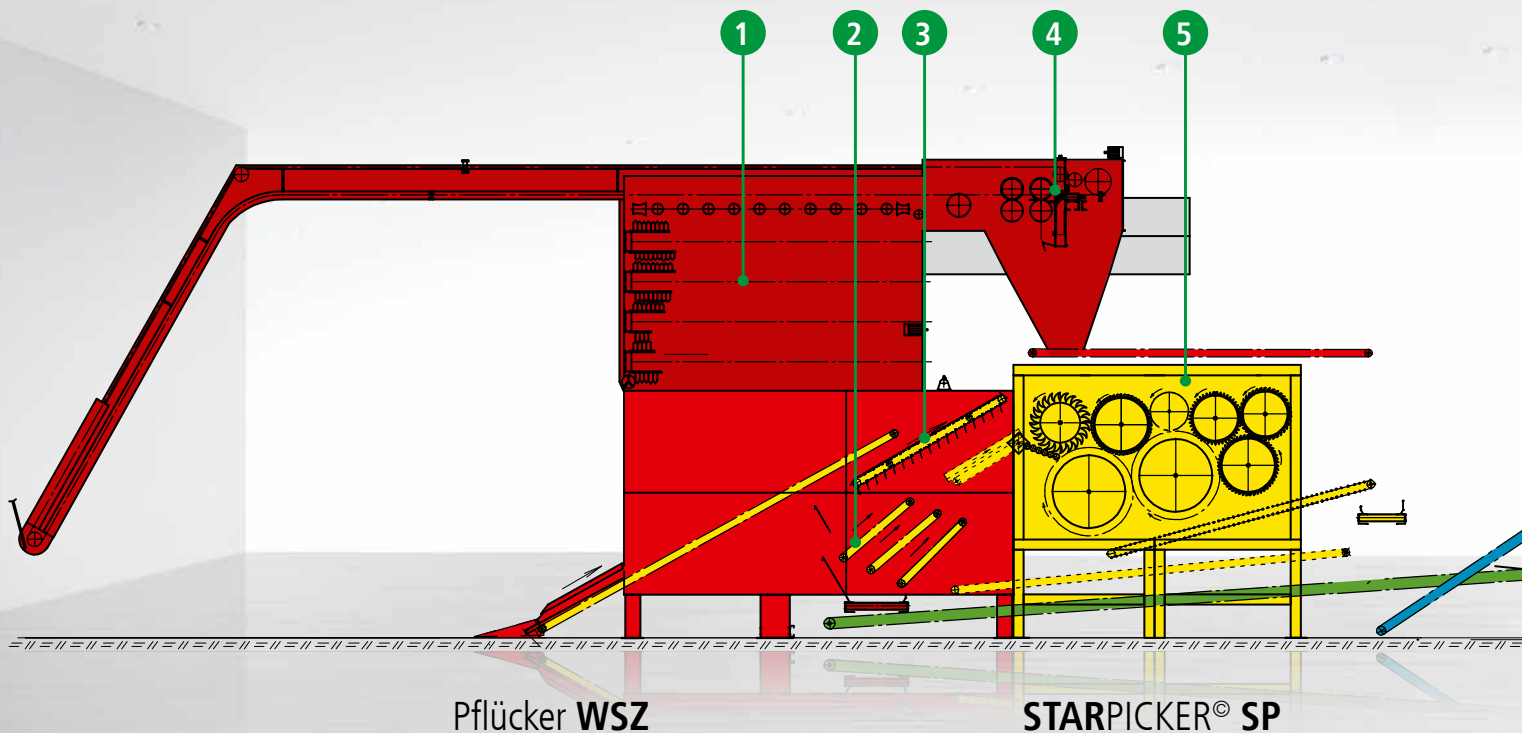


# High-performance Picking Machine

WSZ 1000 - with **STARPICKER**® reliable, highly efficient Harvesting Technology

Spirit of Air®





Pflücker **WSZ**

**STARPICKER® SP**

## WSZ HOP PICKING MACHINE

The WSZ is the most powerful hop-picking machine in our program. Its modular construction enables an ideal adjustment to the hop grower's requirements, providing a flexible installation. Its capacity can be increased later on at minimum expenditure. The WSZ picking machinery guarantees a first-class, gentle picking. By the working platform on three sides, you have a good access to the machine.

Adjustment and maintenance work can be done very comfortably. Picking drums distance, bine passage speed and picking drums rotational speed have a stepless control system. The picking process can easily be adjusted to different hop varieties.

### ADVANTAGES

- ▶ Modular construction
- ▶ First-class, gentle picking
- ▶ Maximal picking capacity
- ▶ Optimally developed components
- ▶ Quiet operation
- ▶ Adjustment and maintenance easy to be done
- ▶ Stepless control system
- ▶ Graphic Touch Control



## PICKER WSZ

### 1 Picking Drums

Picking fingers with springs enable a careful intervention into the whole bine depth. The cones are wiped off gently and without being damaged.

### 2 Triple Pre-Collection

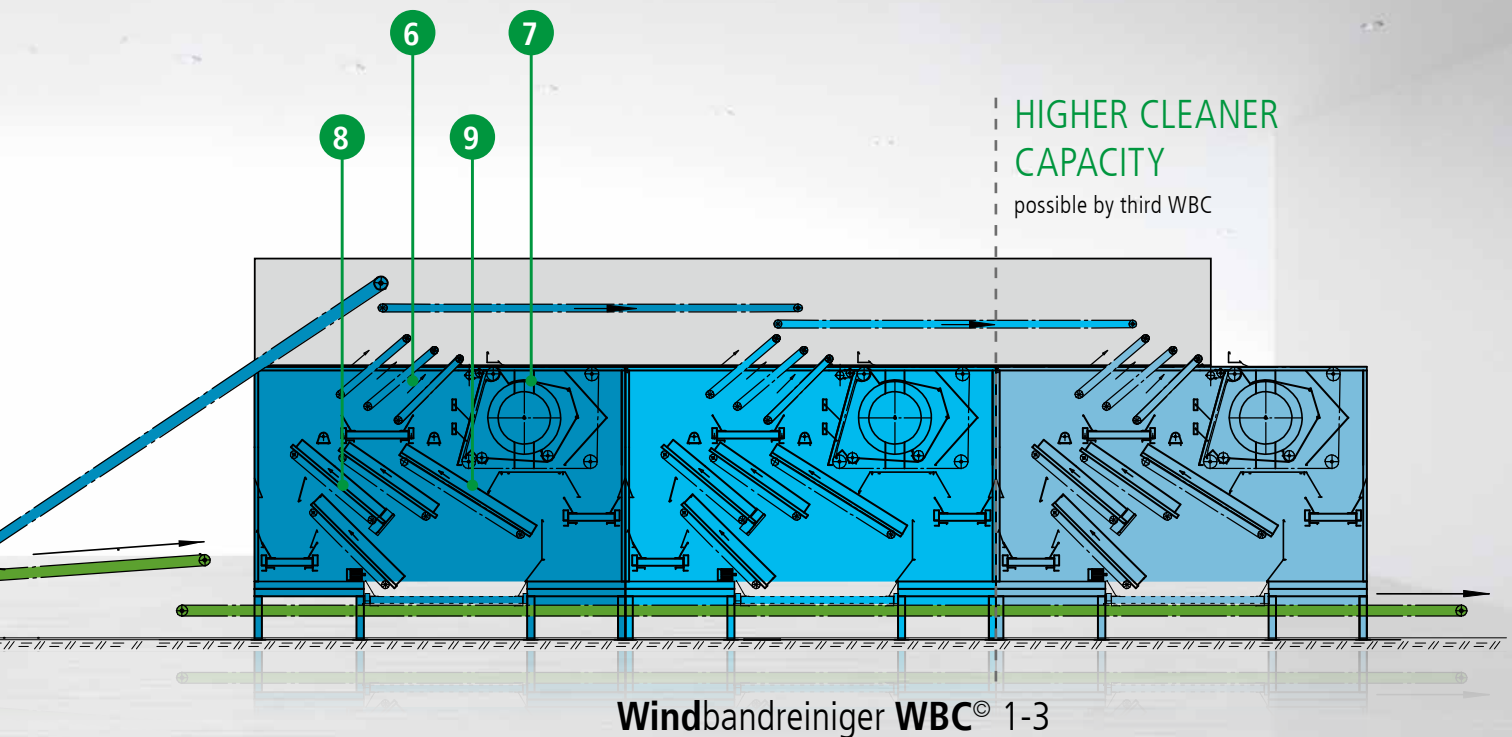
By dividing the quantities, more space for rolling down the cones is provided on the three belts, thus increasing efficiency significantly. Best green hops are harvested already before cleaning process without being damaged. (Different spring sizes available)

### 3 Bypass

A specifically conceived folding rake belt is guiding 97% of the hops carefully past the **STARPICKER®** to the wind belt cleaning.

### 4 Sickle Cutter

The quiet and wear-free sickle cutter is processing the cleanly picked bines.



## STARPICKER®

### 5 STARPICKER®

The **STARPICKER®** is the most powerful subsequent picker unit by WOLF so far. Different, in speed and design optimized picking drums are separating the cones from the remaining material as fast as lightning.

The **STARPICKER®** is working maintenance-free during harvest. A twisting of bines or adhesion of waste material in the drums is almost excluded.

This self-cleaning effect has been achieved by a special cleaning unit. The pipe belt is filtering coarse waste out of the process.

## WINDBELTCLEANER WBC®

### 6 Pre-Collection before Cleaning Fan

About 50% of the total cone proportion is already completely cleaned here and can be led as pure hops directly to the belt leading to the kiln. The pre-collection rubber belt is saving these clean cones from further process steps.

### 7 Cleaning Fan

New frequency-controlled fans are providing an energy-efficient operation.

### 8 Pre-Collection before Rubber Belt Cleaning

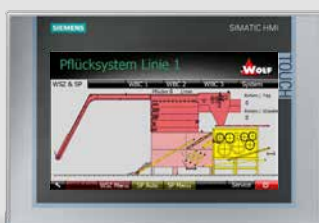
A further 20% of the total cone proportion can already be collected before the belt cleaner as pure hops and transported to the belt leading to the kiln. Each cleaning unit has got its own pre-collection step.

After this pre-collection step, a total of 60% of the whole cone proportion from the hops are already led to the belt leading to the kiln.

Beside the positive effect on hop quality, the pre-collection is relieving the following cleaning belts and increasing their efficiency.

### 9 Rubber Belt Cleaning

The approved belt cleaning system has remained unchanged from the previous version. As usual, the cleaning can be adjusted quite uncomplicated. Here, the last cone is separated from green hops.



### Touch Display

By a clear Touch Display which is easy to handle, you can centrally control the whole WSZ 1000. The mobile panel serves for adjustment on site, so that you can immediately check the result.





WOLF Anlagen-Technik GmbH & Co. KG  
 Agricultural Engineering Division  
 Münchener Str. 54  
 85290 Geisenfeld, GERMANY  
 Telephone +49 (0)8452 99-0  
 Fax +49 (0)8452 8410  
 Email [info.lt@wolf-geisenfeld.de](mailto:info.lt@wolf-geisenfeld.de)  
 Internet [www.wolf-geisenfeld.de](http://www.wolf-geisenfeld.de)

